

MEMORANDUM 092221

Lockout/ Tagout

The OSHA standard for The Control of Hazardous Energy (Lockout/Tagout) (29 CFR 1910.147) for general industry outlines measures for controlling different types of hazardous energy. The LOTO standard establishes the employer's responsibility to protect workers from hazardous energy.

In the construction area it is very normal to see that during demolition activities the proper LO / TO processes are not carried out correctly.

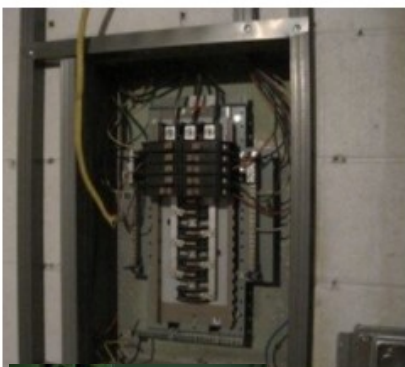
This represents an imminent and very high risk for all subcontractors and all people who have access to the work area, and it is a risk that we cannot take.

For this reason, it is mandatory that the subcontractors in charge of electricity have the correct equipment to carry out the LO / TO in an adequate manner.

So it is also very important to make it CLEARLY ESTABLISHED that removing the panel cover to disconnect wires from the breakers is absolutely prohibited in LEGO Construction Co. projects.

"There are many risks with removing an electrical panel cover, as it exposes energized parts and conductors and poses a serious risk of shock, nuisance tripping, or arc flash explosion. You play a game of chance every time you remove a cover on an energized panel, and each time you do so, your odds of electrical injury increase. In fact, according to the latest data from the Electrical Safety Foundation International (ESFI), electrical fatalities increased by 15% between 2019 and 2020; this is not a risk you want to take."

Violation of these requirements will be sanctioned by corrective measures ranging from suspension of the worker for three days to permanent withdrawal from the project.



Uncovered Circuit Breaker Panels

Arc flash and electrocution are hazards that workers are exposed to when they work near uncovered energized electrical boxes. A fault or dropped tool can cause an arc flash hotter than the sun in an instant.



Lead by Example!!!

Rodrigo Quiroga A

Safety Director
LEGO Construction